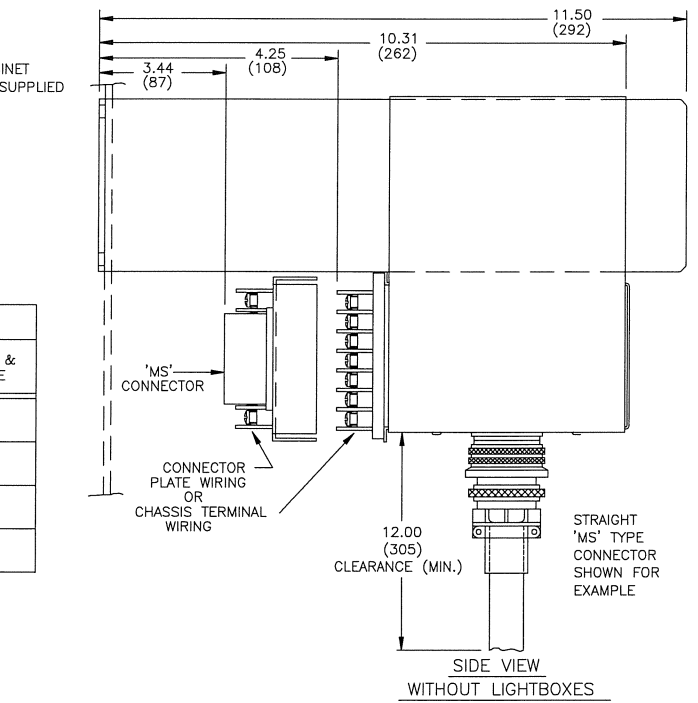


NOTES: FRONT VIEW

- PARENT ITEM NUMBER EXPLANATION
 - SERIES 90 REMOTE LOGIC RACK MOUNT CHASSIS
 - CHASSIS STYLE VARIATION CODE
 - 03 = 5 MODULES WIDE, FRONT ACCESS TERMINALS
 - 04 = 5 MODULES WIDE, FRONT ACCESS TERMINALS WITH LIGHTBOXES (9*LA*)
 - 52 = 5 MODULES WIDE, WITH CONNECTORS MOUNTED ON THE BOTTOM OF CHASSIS
 - CONNECTOR AND WIRING OPTION VARIATION CODE (OPTIONAL)
 - LXX**** = CONNECTOR(S) FOR LAMPS
 - LFX**** = CONNECTOR(S) FOR LAMPS AND SIGNALS
 - LFA**** = CONNECTOR(S) FOR LAMPS, SIGNALS, AND AUX.,
 - XFX**** = CONNECTOR(S) FOR SIGNALS
 - XFA**** = CONNECTOR(S) FOR SIGNALS AND AUX.
 - LXA**** = CONNECTOR(S) FOR LAMPS AND AUX.
 - XXA**** = CONNECTOR(S) FOR AUX.
 - WIRING OPTIONS (4 DIGITS, SEQUENTIAL, NON-SIGNIFICANT)
 - BUS(CARD EDGE CONTACT)FINISH OPTION (BLANK FIELD INDICATES STANDARD TIN PLATING)
 - G7 = GOLD PLATE PER ENG-151-10
 - G8 = GOLD FLASH PER ENG-151-10

WINDOW STYLE	CHARACTER SIZE HIGH (APPROX)	MAX. LINES PER WINDOW	MAX. CHARACTER & SPACES PER LINE
SINGLE ROW	12-1-3 0.281 (7)	6	12
DUAL ROW	12-1-4 0.219 (6)	4	16
TRIPLE ROW	12-1-5 0.188 (5)	3	22
QUAD ROW	12-1-6 0.156 (4)	3	26



- 2 WHEN LIGHTBOXES ARE USED, LAMPS ARE ACCESSIBLE BY REMOVING SNAP-OFF WINDOW (NAMEPLATE), PLUG-IN CARDS ARE ACCESSIBLE BY REMOVING PULL-OUT LIGHTBOX ASSEMBLIES. STANDARD WINDOW NAMEPLATES ARE WHITE TRANSLUCENT POLYCARBONATE WITH ENGRAVED BLACK FILLED CHARACTERS PER CHART.
- 3 SPACE BETWEEN CHASSIS FOR WIRING CLEARANCE IS RECOMMENDED AS SHOWN.

REV	ECN NO.	BY	APPD	DATE	MATERIAL:	TOL. UNLESS SPECIFIED	 PANALARM 1725 WESTERN DRIVE, WEST CHICAGO, ILL., 60185, U.S.A. PHONE: 1-630-231-5900 FAX: 1-630-231-4502
03	10573-01	SM	JT	04/15/91	FINISH: ZINC PLATE/CLEAR CHROMATE	INCHES	
04	7095-10	SK	AHD	11/12/92	USED ON/REF. DWG	.X = .015	
05	11329	JR	JT	09/19/94	94R*	.XX = .010	
06	11752-A	SK	JT	04/08/98	90800-RM-1	.XXX = .005	
07	6351	SK	MAL	03/21/01	900364	MILLIMETERS	
						X.0 = 1.0	
						0.X = 0.4	
						0.XX = 0.1	
						ANGLES ±0°30'	
						SCALE INCH (MM)	
						1:1	