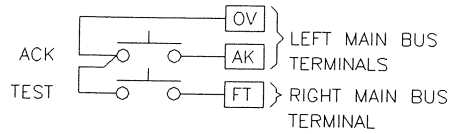


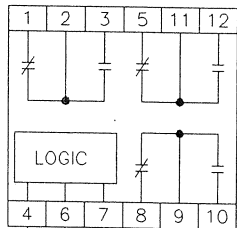
REMOTE PUSHBUTTON WIRING



INTEGRAL PUSHBUTTON MODEL NO. 90PB21*

COMMON AUXILIARY RELAY WIRING

FOR CUSTOMER USE IF REQUIRED

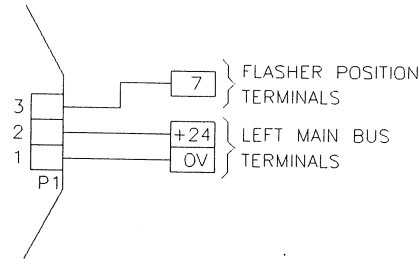


MODEL 90AX1 (DE-ENERGIZED IN NORMAL) OR 90AX2 (ENERGIZED IN NORMAL) WITH WB-3 WIRING BOX

RELAY CONTACTS RATED 4 AMPS AT 250VAC OR 5 AMPS AT 28VDC OR 120VAC AND 0.5 AMP AT 125VDC RESISTIVE LOAD.

NT2-24D AUDIBLE DEVICE WIRING

DIAGRAM SHOWS NOVATONE HORN WITH P1 TERMINAL BLOCK ON P.C. BOARD ATTACHED TO HORN (REF. DWG. 57100-48) FOR EARLIER VERSIONS WITH PIGTAIL LEADS, CONNECT BLACK TO OV, RED TO +24 AND BLUE TO FLASHER TERMINAL (REF. DWG. 57100-44).



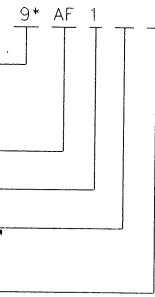
ALARM PLUG-IN CARD MODEL NO.

SINGLE POINT = 91
TWIN POINT = 92
TRI POINT = 93

SEQUENCE CODE
VARIATION

INPUT OPTIONS DWG. LIST, REFER TO 91900-1, 92900-1 & 93*

OUTPUT OPTIONS DWG. LIST, REFER TO 91900-2, 92900-2 & 93*

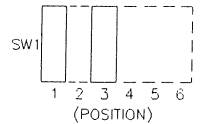


OPERATIONAL SEQUENCE "AF"

INPUT STATUS	VISUAL	AUDIBLE
ALARM OR TEST	FLASHING	ON
ACKNOWLEDGE	STEADY-ON	OFF
RETURN TO NORMAL	OFF	OFF

NOTES:

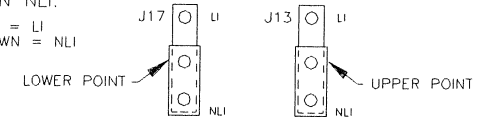
- IF A NEW ALARM OCCURS WHILE TESTING, POINT WILL INDICATE ALARM CONDITION (RE-ALARM) AFTER ACKNOWLEDGE PUSHBUTTON IS OPERATED.
- POINT WILL INDICATE ALARM WHEN TEST PUSHBUTTON IS OPERATED IF THE VISUAL INDICATOR IS OFF OR STEADY-ON.
- IF POINT IS SET FOR NON-LOCK-IN MODE, POINT WILL GO FROM ALARM STATUS TO NORMAL STATUS IF INPUT REVERTS TO NORMAL CONDITION PRIOR TO ACKNOWLEDGE.
- SINGLE POINT CARD LOCK-IN (LI) NON-LOCK-IN (NLI) SELECTION: 1GP, 5GP & 7GP CARDS USE A SWITCH IN SW1 POSITION 1 LI = OPEN, NLI = CLOSED
2GP, 4GP & 8GP CARDS USE SWITCHES IN SW1 POSITIONS 1 & 3. LI POS. 1 OPEN POS. 3 CLOSED NLI POS. 1 CLOSED POS. 3 OPEN



- TYP. TWINPOINT CARD W/REMOVABLE JUMPERS (NLI/LI) SHOWN IN POSITION NLI.

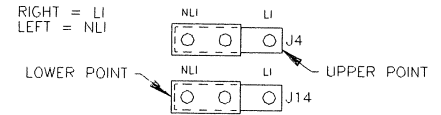
TWIN POINT
090-0012-3-01
(1GP & 2GP)

UP = LI
DOWN = NLI



TWIN POINT
090-0065-3-01
(4GP)

RIGHT = LI
LEFT = NLI



- FOR MODEL 93 LOCK-IN AND NON LOCK-IN INFORMATION, SEE 93450-MP1-1.

REV	ECN NO.	BY	APPD	DATE	MATERIAL:
06	9190-41	JJ	RCV	09/23/85	FINISH:
07	9143-03	IR	PG	04/19/88	USED ON/REF. DWG
08	7099-74	SK	PG	06/16/89	91AF*
09	10390-01	SK	JT	03/12/90	92AF*
10	10761-01	SM	PG	06/18/92	93*
11	11174	SK	PG	12/21/92	
12	11086	SK	JT	11/07/96	
13	11872	SK	MAL	06/15/01	90450-AF1-1-13-01.dwg © 1981

TOL. UNLESS SPECIFIED

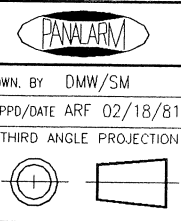
INCHES
.X = .015
.XX = .010
.XXX = .005

MILLIMETERS
X.0 = 1.0
0.X = 0.4
0.XX = 0.1

ANGLES ±0°30'

SCALE INCH (MM)

NTS



PANALARM 1725 WESTERN DRIVE, WEST CHICAGO, ILL., 60185, U.S.A.
PHONE: 1-630-231-5900 FAX: 1-630-231-4502

CUSTOMER WIRING DIAGRAM AND SEQUENCE 'AF' INFORMATION FOR SERIES 90